

D 5102 B
D 5102 BS

D 5101 B
D 5082 B

D 5081 B
D 5081 BS

D 5062 B
D 5061 B

Washing Machine

User's Manual

BEKO



**This product
has been manufactured at
environmental friendly modern
facilities.**

Dear Customer,

We wish that this product, manufactured at modern facilities with total quality notions, will deliver you the best performance. In order to guarantee this, please read this instruction manual thoroughly and keep it for your future reference.

BEKO



Contents

1	Technical Features of Your Washing Machine	5
2	Warning	7
3	Preparation	9
4	Program Selection and Starting Machine	13
5	Care and maintenance	18
6	Installation	20
7	Helpful tips on stain removal	23
8	Before calling service	24

1 Technical Features of Your Washing Machine

	D 5102 B D 5102 BS D 5101 B	D 5082 B D 5081 B D 5081 BS	D 5061 B D 5062 B
Maximum dry laundry capacity (kg.)	5	5	5
Height (cm.)	85	85	85
Width (cm.)	60	60	60
Depth (cm.)	54	54	54
Net Weight (kg.)	64	64	64
Electricity (V/Hz.)	220-240/50	220-240/50	220-240/50
Total Current (A)	10	10	10
Total Power (W)	2100-2450	2100-2450	2100-2450
Washing -rinsing cycle (cyc/min)	52	52	52
Spinning cycle (max cyc/min)	1000	800	600

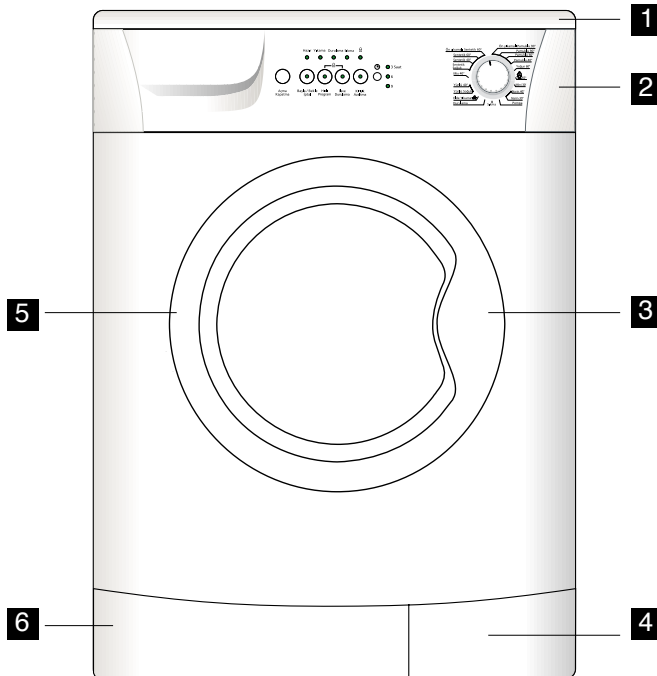
There may be changes in the technical features without prior notice in order to enhance product quality.

The figures in the manual are schematical and may not represent your actual machine one-to-one.

□

conditions with given standards. These values may vary according to usage and environmental conditions.

Your Washing Machine



- 1** Top Lid
- 2** Front Panel
- 3** Handle
- 4** Kick Plate Cover
- 5** Front door
- 6** Kick Plate

2 Warning

- This product is designed for home use.
- Your washing machine is adjusted to 220V.
- If the fuse in your house is less than 16A than have a certified electrician deploy an 16A fuse.
- In case of transformer or non-transformer use, grounding installation must be performed with a licensed electrician. Any use before grounding is not our responsibility.
- Never place your machine over a carpet covered floor. Otherwise electrical parts of your machine may overheat. This may cause malfunction of your machine.
- Make sure hot and cold taps are connected correctly. Otherwise your laundry may come out hot and torn .
- Please call certified service for a failure of electric plug/ cable.
- Be careful about your water hoses are not old. Do not use old/torn water hoses. This may cause stain in your laundry .
- At first use, washing must be performed at Cotton 90°C program without loading with laundry for getting your machine ready for washing.
- Performance of your washing machine depends on the quality of water and hygiene compound used. If low quality and unfitting cleaning material is used the stains will be fixed. Before washing your laundry with stain keep your attention on cleaning the laundry as explained in following pages.
- Lifetime of your product is 10 years. This is period of keeping spare parts for your machine to operate.
- Because of quality control procedures there might be little amount of water in your machine. This does not have any damage to your machine.
- Your machine is programmed for starting operation again when electricity is off and on afterwards. You can not press On/Off button to cancel program. Machine will go on program when electricity is on. To CANCEL the program press >Start/Pause/Cancel< button for three seconds. (See. Canceling a program)
- If pre-wash additional function led is blinking than your machine is in child-proof-lock position. (See. child-proof-lock)
If “Ready” led on program progress display is blinking program selection knob is middle position. In this case turn the knob and adjust it again. If the warning continues call authorized service.
- After your machine starts operation if Start/Pause/Cancel key starts blinking than door is not locked. Open and close the door again begin washing program

again.

- If “washing” led on program progress display is blinking either there is no water or tap is off. Check your taps. Turn your machine off and on. If the problem persists unplug your machine, turn off tap water and call authorized service.
- If program is started or program selection can not be performed your machine might be in protection mode due to infrastructure problem (voltage, water pressure, etc.) Press and hold the > Start/Pause/Cancel < button for 3 seconds in order to switch machine to factory settings. Simultaneously, “Cancel” will appear on the display.
- Most of the warnings resulting in calling an authorized service are due to infrastructure problems. For this reason applying to an Authorized Service is recommended.

3 Preparation

Before starting your machine please beware of below mentioned points:

- Did you plug the cable?
- Did you connect draining hose correctly?
- Did you close front door?
- Did you open tap water?

If you haven't installed your machine please read to "Installation" section.

Sorting the Laundry

Sort laundry according to type of fabric, color, level of dirtiness and allowed washing temperature. Do not wash white laundry together with colored ones. Remove hard parts like belt, wrist button, curtain buttons, etc. or place laundry in a cloth bag. Empty pockets. Zip off and button up. Very tiny laundry like baby clothes may get into inside of drum, midst of bellow, pump filter, hose, etc. in order to prevent this it is advised to place such laundry in a special laundry string bag or large laundry. See practical and useful information section for soiled laundry. Your machine can wash "Machine Wash" or "No-matting" labeled woolen with special woolen program. Delicate laundry with "Do not wash" or "hand wash" label (silk, cashmere, pure wool, etc.) can be washed in the special hand-wash program.

Opening Front door

Pull the handle to open the front door. Your machine's front door is designed for opening during only machine is not operating. If the led displays "ready" than door can open.

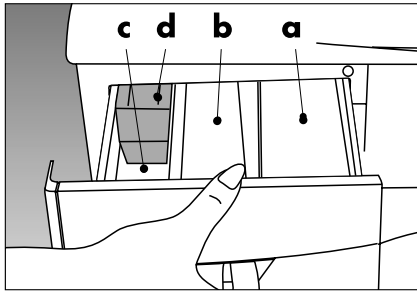
Loading machine with laundry

Fill the machine by unfolding and not squeezing laundry. Place hand-woven garments inside-out to the machine. Make sure there is no laundry jammed between bellow and front-door.

Close the loading door by pushing. If loading door is not perfectly closed machine will not start.

Selection of detergent and softener

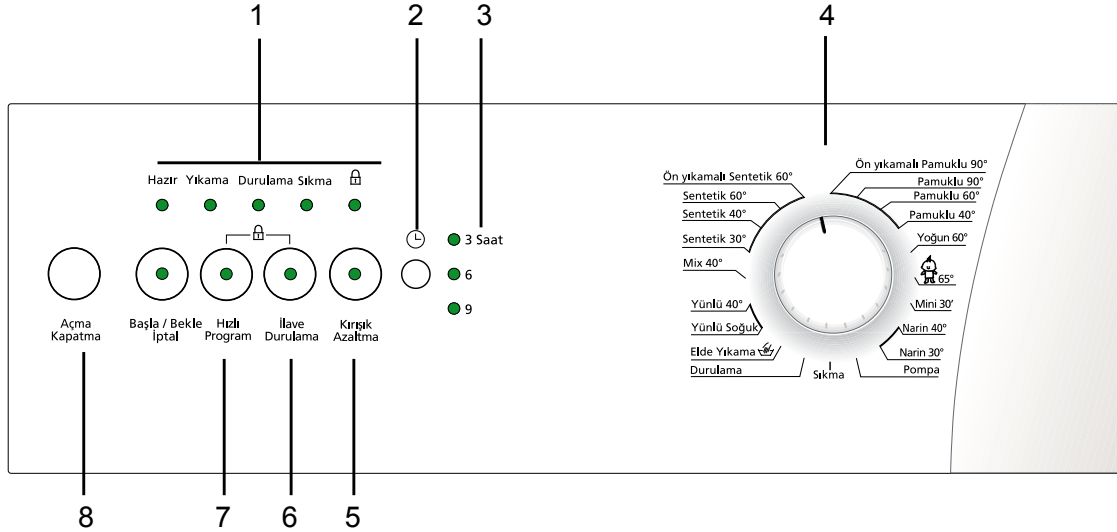
Quantity of the detergent used depends on hardness of water and how soiled laundry is. Recommended values are indicated on the package. If your laundry is low soiled and/or hardness of water is low use less detergent as indicated on the package. Otherwise it may result in excessive foam. You should use detergent specially designed for automatic washing machines. Avoid using bleach product containing sulfur or chlorine. Place powder detergent and softener in appropriate drawer compartment and close detergent drawer.



- a. Compartment I, powder detergent drawer for pre-wash.
- b. Compartment II, powder detergent drawer for main wash.
- c. Siphon
- d. Softener drawer

Fill the softener as indicated (usually <100ml; 1 tea bag) on package. Never fill more than “MAX” level. Excess amount will drain to suction cup and be wasted. You might need to fill softener again. If softener is thickened over time add some water for thinning. Softener may obstruct suction cup and block flow.

Control Panel



- 1- Program progress display
- 2- Time delay selection button
- 3- Time display
- 4- Program selection knob
- 5- Anti-creasing
- 6- Rinse Plus
- 7- Quick Wash
- 8- On/Off button

Additional Functions

Quick wash

Shortens washing time for lightly soiled fabrics. This function can be used for cotton and synthetic programs for temperatures below 60°C.

Rinse plus

By using this function your machine will add another rinse process to the three rinse processes that it has already done. This additional rinse will reduce any affects on sensitive skin by washing leftover detergent.

Anti- creasing

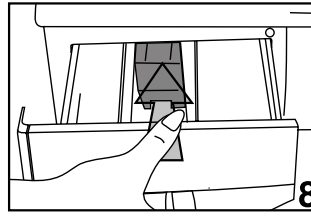
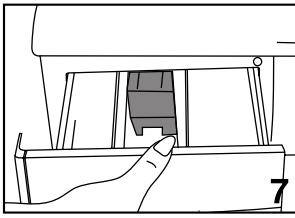
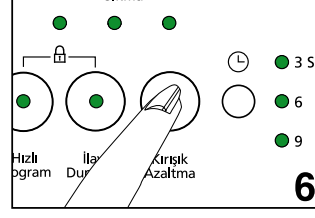
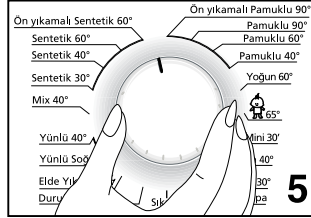
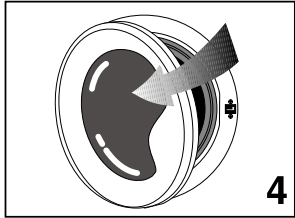
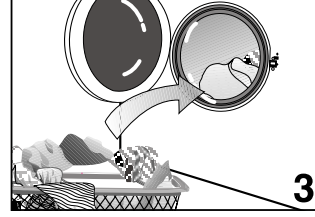
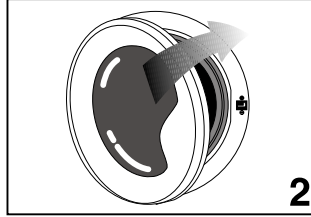
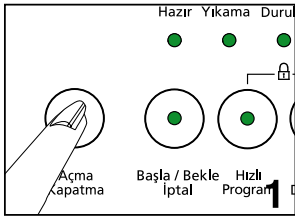
To avoid wrinkling of your clothes, select this function. When Anti-Creasing is chosen please load less cloth, this way a special washing and spinning profile will reduce the wrinkles and your clothes will be easy to iron.

4 Program Selection and Starting Machine

Plug you machine to outlet. Turn on the machine by pressing “On/Off” key. Open the door by pulling the handle and load the machine without exceeding loading capacity and close the door. Specify the appropriate program by looking at program selection table according to type of laundry, degree of soiledness and washing temperature. Position program selection key to desired washing program-temperature. Select convenient spin cycle related to selected

program. If you are using additional function press desired additional function key.

Afterwards place appropriate detergent and softener to your machine’s detergent drawer. Start your machine by pressing Start/Pause/Cancel button. Start/Pause/Cancel key’s led will be on. After your machine starts, you can follow from the program progress display at which step your machine is.



Program selection table

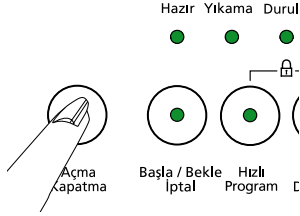
Program	Type of laundry	Max Load (kg)	Program Duration (min)	Water Consumption (lt)	Energy Consumption (kWh)	Quick wash	Rinse Hold	Anti-Creasing
Prewash + Cotton 90	Heavy soiled Durable fabrics made of cotton and linen	5	160	65	2.50		•	•
Cotton 90	Heavy soiled Durable fabrics made of cotton and linen	5	150	55	2.40	•	•	•
Cotton 60	Normal soiled cotton and linen durable to heat	5	130	49	1.10	•	•	•
Cotton 40	Less soiled cotton and linen sensitive to heat	5	125	49	0.65	•	•	•
Intensive 60*	Heavy soiled Durable fabrics made of cotton and linen	5	135	49	0.95		•	
Baby 65	Heavy soiled Durable fabrics made of cotton and linen (baby clothes etc.)	5	160	60	1.15		•	
Prewash + Synthetic 60	Heavy soiled cotton/synthetic blended durable to heat	2,5	125	55	0.90		•	•
Synthetic 60	Normal soiled cotton/synthetic blended durable to heat	2,5	115	50	0.85	•	•	•
Synthetic 40	Less soiled cotton/synthetic blended durable to heat	2,5	105	50	0.55	•	•	•
Synthetic cold	Very Less soiled or cotton/synthetic blended sensitive to heat	2,5	85	50	0.15	•	•	•
Mix 40	Normal soiled cotton and linen sensitive to heat	3.5	95	45	0.50	•	•	•
Delicate 40	Delicate, sensitive synthetic, cotton blended	2	70	55	0.40		•	•
Delicate 30	Delicate, sensitive synthetic, cotton blended	2	65	55	0.25		•	•
Woolen 40	Woolen and delicate blended with machine wash label	1.5	55	50	0.40		•	
Woolen Cold	Woolen and delicate laundry with machine wash sign	1.5	45	50	0.03		•	
Handwash 30	Special program for silk, cashmere or laundry with no machine wash sign	1	40	35	0.15			
Mini 30	Special program for Less soiled linens	2.5	30	45	0.10			
Rinse	Rinse Program	5	42	30	0.10			
Spin	Spin Program	5	9	-	0.05			
Pump	Pump Program	-	2	-	-			

Intensive60*: Energy Labeling Program (EN 60456)

Pressing “On/Off”

By pressing “On/Off” key you can make your machine ready for selecting program. When “On/Off” key is pressed “Ready” led will displayed meaning “door can open”. Press “On/Off” key again for turning your machine off.

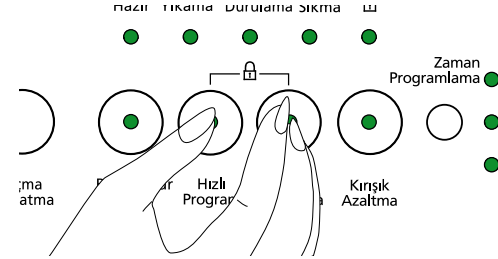
Pressing “On/Off” does not mean program started operation. You must press “Start/Pause/Cancel” for starting the program.



Child-proof lock

During washing laundry in order to maintain that program progress is not affected by pressing keys by children there is child-proof lock. To enable child-proof lock, after washing begins, press Pre-wash and fast program function buttons together simultaneously for three seconds. Pre-wash additional function led will always blink.

After program ends in order to start a new program or alter the program you have to disable child-proof lock. To do this press same buttons for three seconds and Pre-wash function led will be off.



Function Selection

Additional functions selectable according to selected program can be selected by pressing related key. Led of selected function will be on.

If not selected together some additional functions go off when it is not selected with other one. For example; when using cotton program, pre-wash and fast program additional functions can not be selected together. After selecting pre-wash program, if fast program key is pressed fast program will be on and pre-wash function led will go off.

Program Progress

After machine starts operation relevant program led on program progress display will be on. When a step is completed that step's led is off and next step's led is on. When “On/Off” button is pressed “Ready” led will be on. After washing program is selected when “Start/Pause/Cancel” key is pressed “Washing” led on program progress display will be on. At the final step “Cycle” led is on. When program is completed “Ready” led will be on again.

During machine operation you can press “Start/Pause/Cancel” key for getting machine to “Pause” position. In this

case “Start/Pause/Cancel” led will blink.

Changing Program

You can use this feature for washing laundry in the same textile group for washing at lower or higher temperatures. For example, instead of Cotton60, Cotton40 can be used. For selecting Cotton40 instead of Cotton60 by pressing “Start/Pause/Cancel” key machine is switched to pause position. Program knob is turned for selecting Cotton40 program.

Even program selection button is changed during the program initially selected program will be executed. For changing washing program continuing program must be cancelled. (See Cancelling a program)

For selecting additional functions or spin cycle necessary changes can be performed after pressing Start/Pause/Cancel button. Although selected additional program must be compatible with washing program. For example when your machine is main wash mode you can select additional rinse function but you can not select pre-wash.

Adding laundry

If you want to add laundry to your machine after program begins press Start/Pause key for switching machine to pause mode. If water level in the machine is appropriate “ready” led on program progress display is on and laundry can be added to the machine. If “ready” led is not on after one minute than water level in the machine is not appropriate and laundry can not be added. You can press “Start/

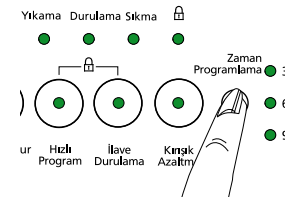
Pause/Cancel” key for continuing program.

Time delay for program start

Use time delay key you can start 3 hour,6 hours or 9 hours later for starting selected washing program.

When time delay key is pressed one 3hours delay is adjusted and led will go on. If same key is pressed once more delay is 6hours, and if it is pressed once more 9 hours delay is selected. If time delay key is pressed again delay is cancelled. After selection of time delay when “Start/Pause/Cancel” is pressed program can be started with delay. During delay period door can be opened or laundry can be added

After time delay is initiated by pressing “Start/Pause/Cancel” you can switch machine to “Pause” mode and change delay time.



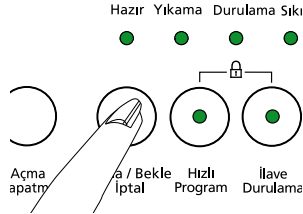
Cancelling a Program

For canceling a program “Start/Pause/Cancel” key is pressed for three seconds. After this period “Start/Pause/Cancel” and all other leds will be off .You can select a new program and start washing.

If cancel task is performed during washing “Spin led on display will go on, machine pumps and when “Spin” led is off “Ready led will be on, door can be opened and new program can be selected.

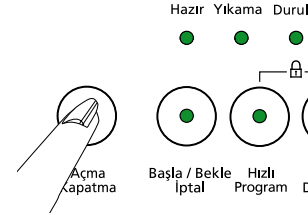
Even program selection button is changed during the program initially selected program will be executed. For changing washing program “Canceling a program” must be performed afterwards new program can be selected and started

After machine starts operation even spin cycle or washing temperature is changed, initial cycle and temperature is valid. In order to change spin cycle of temperature after pressing “Start/Pause/Cancel” new cycle or temperature can be selected.



End of Program

When program end “ Ready” led will be on and door can be opened and machine is ready for next washing. Press “On/Off” for turning machine off.



Emptying Laundry

After program ends machine automatically stops. Turn off tap water. Pull the handle and open loading door. Turn off your machine by pressing “On/Off”. After taking laundry out keep the loading door open and let the drum ventilate. Check the bellow and clean.

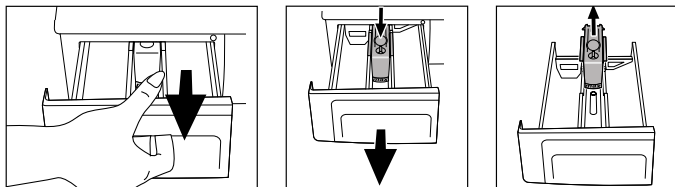
5 Care and maintenance

Detergent Drawer

Powder detergent residue may accumulate in drawer after a while. In order to clean detergent drawer press the marked point of the siphon on softener compartment and push the drawer towards yourself. Wash the drawer with water

Siphon

Do not neglect cleaning suction cup when it becomes soiled. In order take suction cup out first take detergent drawer out. Clean it in order to eliminate blocking by softener residue. After cleaning place suction cup to its place and make sure it is placed properly.



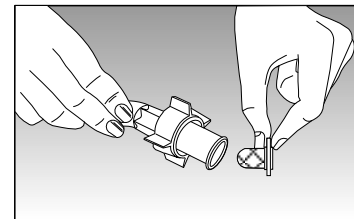
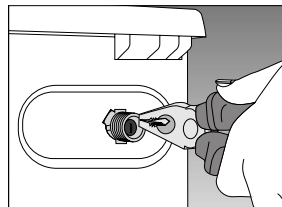
Water Entrance Filters

There is a filter at each flat end where water inlet hose is connected to tap and at each of water inlet valve placed behind the machine. These filters blocks entrance of foreign objects and dirt entering to the machine. Filters must

be when they are soiled. For doing this, turn off tap water. Pull out water inlet hoses. Clean top of water inlet valve filter with a brush. If filters are extremely soiled you can pull it out with a pincer. You can take out flat side of water inlet hoses with its seal and clean with tap water. (2 filters in Single water inlet machines, 4 filters in double water inlet machines)

Hose

There is risk of freezing in cold region, if your machine is placed in a cold place remaining water in hoses must be drained with pump filter when machine is not used. Water inlet hoses can be drained by taking it out from tap.



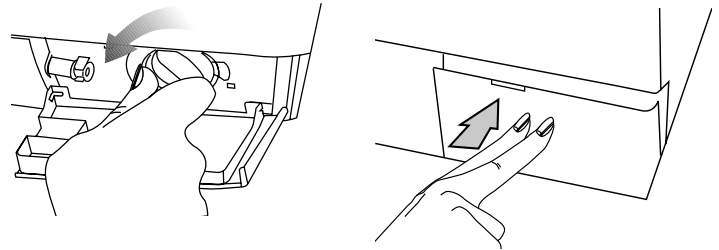
Cleaning Pump Filter

There is filter system maintaining long lifetime of pump by blocking foreign objects like button, cloth fiber enter to the pump during drain of washing water. It is useful to clean the filter when it is soiled.

In order to this:

Unplug your machine. Open the filter at bottom right corner by pressing marked space on the lid.

Hot water risk: There might be 15 lt., 90°C hot water in the drum. Open the filter carefully.



Caution!

If the filter and hose tap does not fit, it leaks water.



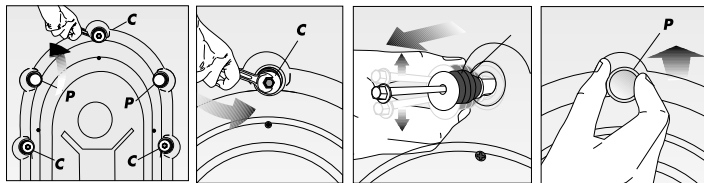
Before opening filter drain water with drain hose. Pull out drain hose from its place. Prepare a suitable container and open tap of hose. After water is drained place the tap properly. Open the filter by turning and drain the remaining water (max30ml) to filter tap. Clean remaining foreign object in the filter. When finished turn in clockwise direction and close. Close the filter tap by pushing.

6 Installation

If your system is not ready, let a certified plumber make it ready.

1. Removing the transportation locks

Before the washing machine is operated, the transit bars must be removed! In order to do this:

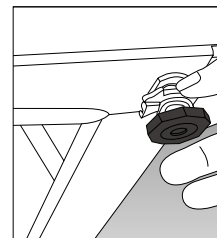


1. Loosen “C” bolts by rotating them counter clockwise with a suitable spanner
2. Remove transportation locks by turning.
3. Place “P” plastic covers onto the openings of transportation locks by rotating in direction of arrow and pushing.

Attention please! Store the transit bars for using when machine is to be transported again. Always transport your machine with transportation locks.

2. Leveling the feet

In order to operate your machine without noise and vibration it must be properly on balance. Four feet of your machine can be adjusted. First loosen plastic counter bolt. Tighten the counter bolt after adjusting the feet for leveling your machine.



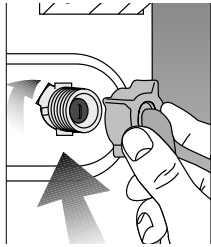
3. Water Connections

a) Water Inlet Hose

Your machine is connected to water supply by special hoses supplied by the machine. Red hose or hose written red on it is hot water inlet, blue hose or hose written blue on it is cold water inlet.

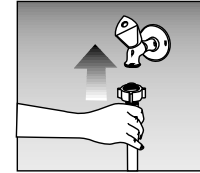
There plastic seal (4 for double water inlet models, 2 for single water inlet models) on hose or plastic bag for eliminating any leakage in connections points. These seals must be used on each side of the connection. Seals on machine side must be connected filter cannal.

Connection points are below water pressure there turn on tap water after connection. Check all connections for leaks In order to eliminate any risk due to water leakage keep the taps off when machine is not used.



Your machine will operate efficiently if the water from tap is minimum 1 and maximum 10 bars. Practically 1 bar means 8 liters of water in one minute when tap is fully on.

Connect dirsekli end to the machine. Tighten bolts with hand power, do not use spanner. Double inlet models can be used with blind cap as a single inlet machine. Connect blind cap to hot water inlet. Seal must be for stopping water leakage.



Do not connect single inlet machine to hot water. If machine is connected with Y part to a double inlet and over 40°C for single inlet machines, machine may switch to protection mode.

b) Water drain hose

Water drain hose could be placed either at the side of the bath tub, or directly to the drain. The hose should not be bent. Water drain hose should be secured with the elbow so that it would not fall down on the ground.

The hose should be placed between 40 and 100 cm. from the ground.

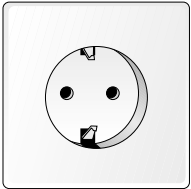
Water drain hose could be placed directly to the drain water inlet.

4. Electrical connection

Connect the power cord to the appropriate electrical system which is being supported by the maximum voltage and current rating indicated on the rating plate placed inside the kick plate.

Look! Page 1, Steps before operating Fullautomatic Washing Machine and safety precautions.

Make sure that you have grounded power outlet.



Attention! Before any operation of the machine check the following.

- Did you close the front door?
- Is the tap open?
- Is water drain hose placed properly?
- Is power connected?

7 Helpful tips on stain removal

The following □
fabric manufacturer.



Alcoholic beverages: Wipe the fabric first with water, then water-glycerine solution and rinse with vinegar-water solution.



Shoe polish: Without harming the fabric, remove the stain carefully and grind it with detergent. If this doesn't help, prepare a water to alcohol solution (2 to 1) and rub the fabric, then wash it with warm water.



Tea and coffee: Pour hot water on to the stain and the fabric is white, pour some bleach and rinse it with water.



Bubblegum: Harden the gum stain by putting an ice on it. Then scrape off the stain carefully.



Chocolate and cocoa: Place the fabric into cold water for a period of time. Rub it with soap or detergent and wash it with the warmest water that the fabric can withhold. If any grease stain leftover wipe it with oxygen water.



Tomato paste: Scrape the hardened paste and leave the fabric for 40 minutes into cold water. Rub it with detergent and wash.



Egg stain: If the stain is hardened scrape the stain and wipe it with wet sponge or a soft cloth. Rub it with detergent and wash with cold water.



Grease stain: Scrape the stain and rub it with detergent. Then wash the fabric with warm water.



Mustard: Use glycerin and rub the fabric with detergent. If unsuccessful, wipe the stain with alcohol. (Colored and synthetic fabrics need 2 cups water and 1 cup alcohol solution.)



Blood stain: Leave the fabric for 30 minutes in the cold water. Use ammonia solution to remove the stain. (4 liters water-3 spoonful of ammonia.)



Ice-cream, milk and cream: Place the fabric into cold water for a period of time. Rub it with soap or detergent and wash it with the warmest water that the fabric can withhold. If any grease stain leftover wipe it with oxygen water.



Mildew: Do not let mildew stains stay for long periods of time. Place the fabric into cold water for a period of time. Rub it with soap or detergent and wash it with the warmest water that the fabric can withhold. If any grease stain leftover wipe it with oxygen water.



Fruit: Pour cold water on to the stain and do not use warm water to rinse. Let it sit for 2 hours and wipe it with white vinegar and rinse.



Ink: Let the cold water run on the stain and wait until the stain is gone. Later rub it with lemon juice and detergent, let the stain stay for five minutes and rinse the fabric.



Grass stain: Rub the stain with detergent. If the fabric lets, use bleaching element. Wools should be wiped with alcohol.



Paint: Use thinner to remove the stain. Put a cotton cloth on the wool fabrics. Rub the stain with detergent and rinse with cold water.



Burnt stains: Use bleach if permissible. For wool fabrics place a oxygen water inserted cotton cloth on the stain and iron. Rinse completely and wash the fabric.

8 Before calling service

You turned the machine on, but the leds are off on the panel.

Check the grounding on the power cable or a blown fuse.
Check the front door proper closure.

Machine does not take water.

Check the front door for proper closure. Either taps are closed or water intake filters are clogged.

Taken water is directly discharged.

Check if the discharge hose placed as described in the users manual or not.

Water coming from beneath the machine.

Check the water intake and drain hoses. Tighten the connections. The washers of the hoses may be worn out. If non of the both, the pump filter is not closed properly.

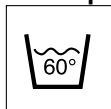
Foam coming out of the detergent dispenser.

Check whether your detergent is suitable for automatic machines. Next time use less detergent.

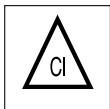
Pump does not drain water.

Clean the pump filter. Check whether the drain hose is bent or not. If there is need to clean the pump filter, refer to the pump filter cleaning section of the manual.

Descriptions of the international textile care label (ITCL) symbols



Washing temperature



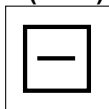
Bleach can be used



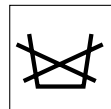
Do not use bleach



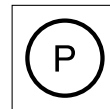
Do not machine wash



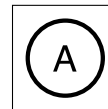
Dry on horizontal surface



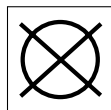
Do not wash



Dry clean



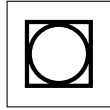
Chemicals can be used



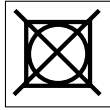
No dry cleaning



No spin



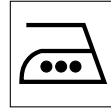
Can be washed at centrifugal machine



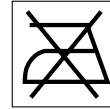
Do not wash centrifugal machine



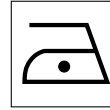
Line dry



Iron permitted



Do not iron



Warm iron